

SUPREME® WL

ENVIRONMENTALLY FRIENDLY SOLUTION

The Supreme Water-Lubricated Forward Seal (STF-WL) is especially developed to prevent water leakage from your open water-lubricated stern tube system into your engine room.

This environmentally friendly solution provides extra safety through the incorporated inflatable seal and is in line with the VGP/VIDA regulations.

ADVANTAGES

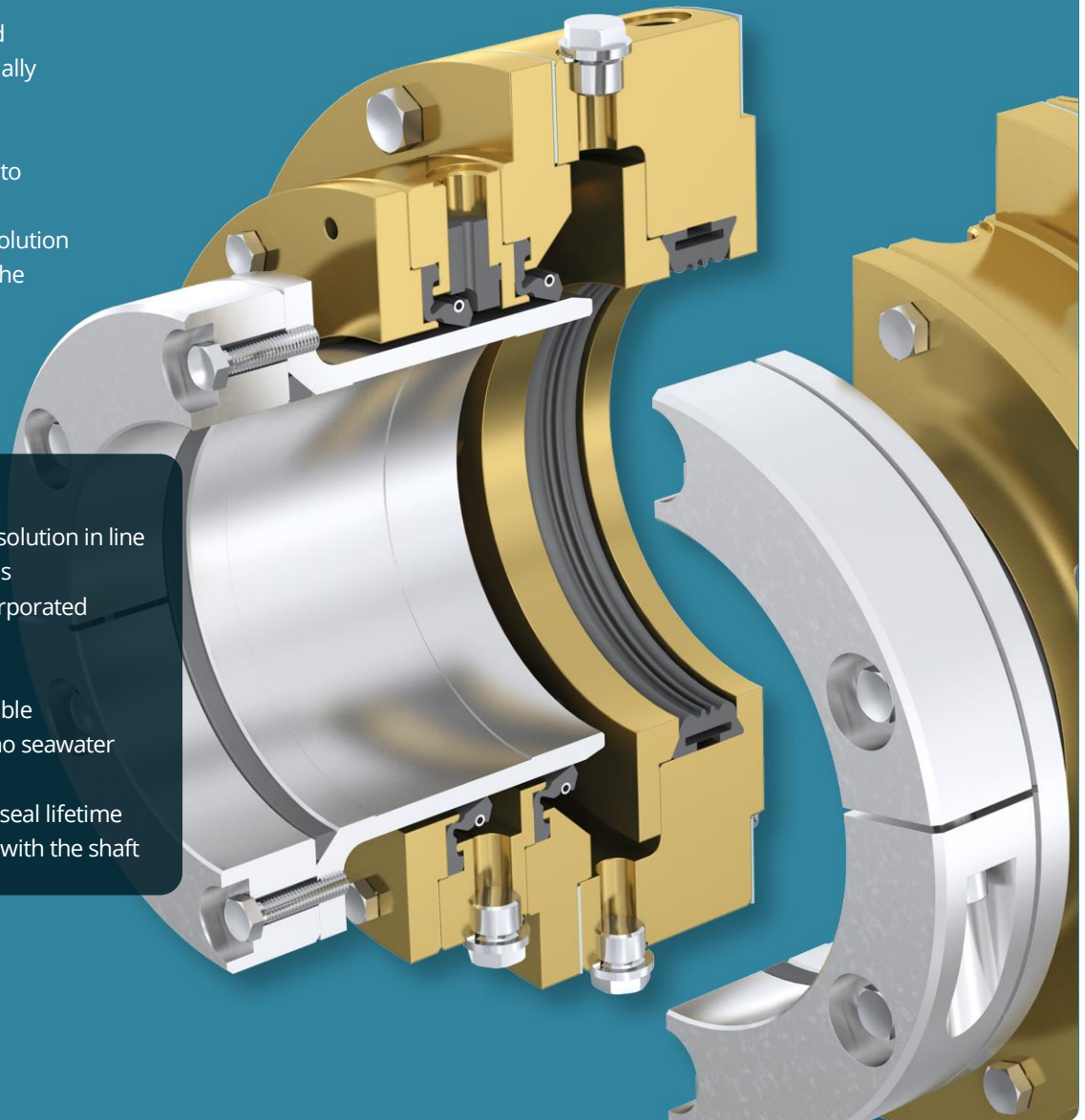
- Environmentally friendly solution in line with VGP/VIDA regulations
- Extra safety through incorporated inflatable seal
- Condition monitoring
- In situ maintenance possible
- Water flush connection: no seawater inside
- Optimised and extended seal lifetime
- Repositionable to realign with the shaft



VGP
COMPLIANT



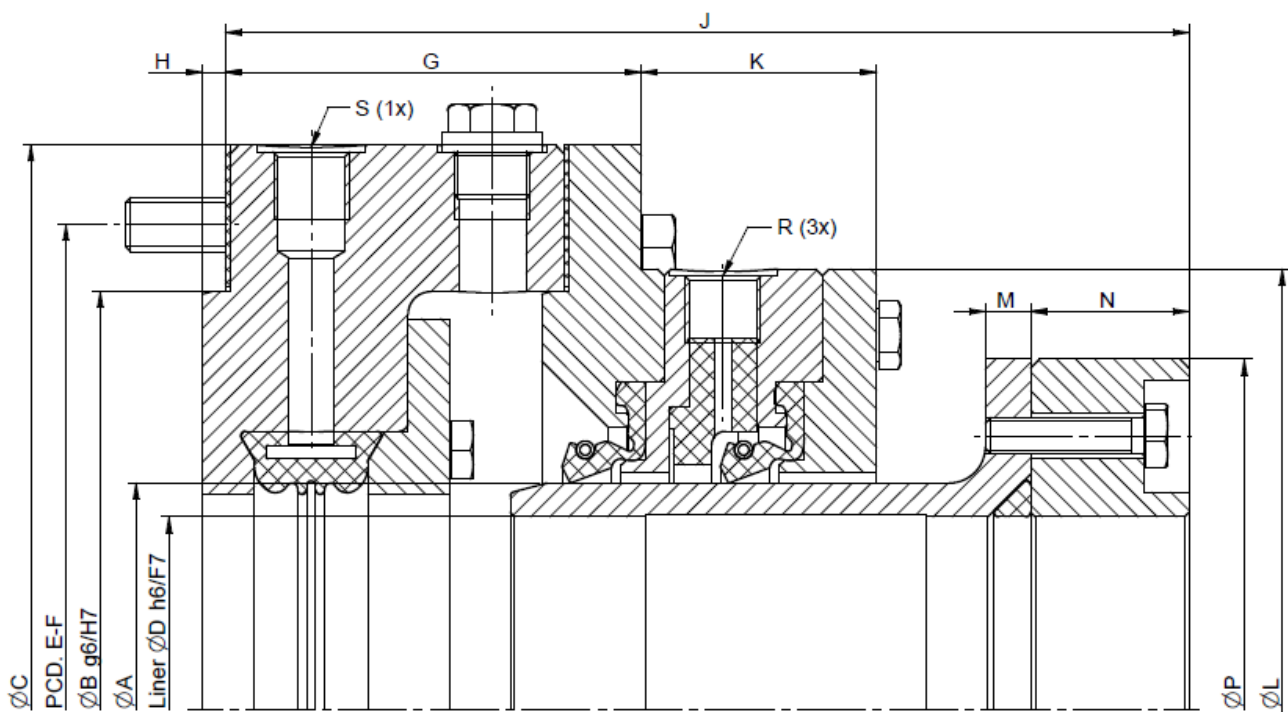
CONDITION
MONITORING



MATERIALS

- NBR lip seals with Hastelloy® springs
- Bronze housing parts
- Stainless steel liner
- Cast iron clamping ring
- AISI 316 Stainless steel Water tank
- Wear Resistant HML liner coating

Type approvals from the major classification societies are available [here](#).
Curious about all customized options? [Take a look at the overview for all possibilities!](#)



A	D	B	C	E	F	G	H	J	K	L	M	N	P	R	S
110	70 - 100	195	260	230	8x M10	91	5	203	52	205	10	35	165	G 3/8"	G 3/8"
125	101 - 115	210	275	245	8x M12	91	5	203	52	220	10	35	180	G 3/8"	G 3/8"
140	116 - 130	225	290	260	8x M12	91	5	203	52	235	10	35	200	G 3/8"	G 3/8"
155	131 - 145	240	305	275	8x M12	91	5	212	52	250	10	35	210	G 3/8"	G 3/8"
170	146 - 160	255	320	290	8x M12	91	5	212	52	265	10	35	230	G 3/8"	G 3/8"
190	161 - 180	275	340	310	8x M12	91	5	212	52	285	12	35	250	G 3/8"	G 3/8"
200	181 - 190	285	350	320	8x M12	91	5	219	52	295	12	40	260	G 3/8"	G 3/8"
220	191 - 208	305	370	340	8x M12	91	5	219	52	315	12	40	280	G 3/8"	G 3/8"
240	209 - 228	345	425	390	12x M16	91	5	224	52	350	12	40	300	G 3/8"	G 3/8"
260	229 - 248	365	445	410	12x M16	91	5	224	52	370	12	40	320	G 3/8"	G 3/8"
280	249 - 264	385	465	430	12x M16	91	5	229	52	390	15	40	350	G 3/8"	G 3/8"
300	265 - 284	405	485	450	12x M16	91	5	234	52	410	15	40	370	G 3/8"	G 3/8"

Despite the constant care and attention, we pay to the composition of this document, no rights can be derived from the contents. We accept no liability for any errors and / or omissions in the content of the document.

A	D	B	C	E	F	G	H	J	K	L	M	N	P	R	S
330	285 – 300	435	515	480	12x M16	91	5	234	52	440	15	40	400	G 3/8"	G 3/8"
330	301 – 314	435	515	480	12x M16	121	5	264	52	440	15	40	400	G 3/8"	G 3/8"
355	315 – 337	475	565	525	12x M20	123	5	279	60	465	15	40	430	G 3/8"	G 3/8"
380	338 – 362	500	590	550	12x M20	123	5	279	60	490	15	40	460	G 3/8"	G 3/8"
400	363 – 381	520	610	570	12x M20	123	5	284	60	510	20	50	480	G 3/8"	G 3/8"
420	382 – 400	540	630	590	12x M20	123	5	289	60	530	20	50	500	G 3/8"	G 3/8"
450	401 – 428	575	675	630	12x M20	123	5	289	60	560	20	50	530	G 3/8"	G 3/8"
480	429 – 450	605	705	660	12x M20	126	5	294	60	590	20	50	560	G 3/8"	G 3/8"
480	451 – 457	605	705	660	12x M20	136	5	304	60	590	20	50	560	G 3/8"	G 3/8"
500	458 – 476	625	725	680	12x M20	136	5	304	60	610	20	50	580	G 3/8"	G 3/8"
530	477– 504	655	755	710	12x M20	136	5	309	60	640	20	55	610	G 3/8"	G 3/8"
560	505 – 532	700	820	765	12x M24	138	5	314	60	670	20	55	650	G 3/8"	G 3/8"
600	533 – 570	740	860	805	12x M24	138	5	319	60	710	20	55	700	G 3/8"	G 3/8"
630	571 – 598	770	890	835	12x M24	138	5	334	60	740	25	55	730	G 3/8"	G 3/8"
670	599 – 635	810	930	875	12x M24	138	5	354	60	780	25	60	770	G 3/8"	G 3/8"
710	636 – 672	865	990	930	16x M24	140	5	359	64	820	25	60	830	G 3/8"	G 3/8"
750	673 – 710	905	1030	970	16x M24	140	5	359	64	860	25	60	870	G 3/8"	G 3/8"
800	711 – 750	960	1090	1030	20x M24	140	5	362	64	910	25	60	910	G 3/8"	G 3/8"
850	751 – 795	1010	1140	1080	20x M24	140	5	362	64	960	30	60	960	G 3/8"	G 3/8"
900	796 – 840	1065	1200	1135	20x M24	150	7	371	69	1010	30	65	1010	G 1/2"	G 3/8"
950	841 – 890	1115	1250	1185	20x M24	150	7	381	69	1070	30	75	1080	G 1/2"	G 3/8"

Despite the constant care and attention, we pay to the composition of this document, no rights can be derived from the contents. We accept no liability for any errors and / or omissions in the content of the document.

The SUPREME STF WL seal consists of two lip seals which are clamped in housing parts. The lip seals run on a corrosion resistant liner. This liner is connected to the shaft with the aid of a split clamp ring. The purpose of the SUPREME STF-WL seal is to prevent water leakage from the stern tube (lip seal #1 and #2). Lip seal #2 is lubricated with fresh water from a stainless water tank. A combination of temperature difference and rotation of the propeller shaft, together with the presence of a scraper in the seal, forces the water to circulate. The system comes with an optional stainless steel fresh water tank which functions as a condition monitoring tool.

Inflatable seal in 2 lip seal type execution,

Static eccentricity (depending on seal size) :	0,6 – 1,0 mm;
Housing :	Bronze;
Inflatable seal :	NBR;
Sealing rings :	NBR, provided with Hastelloy spring;
Liner :	Chromium steel, provided with HML;
Clamp ring :	Cast iron;
Seal tank :	AISI 316;

Seal will be delivered ready for mounting, including:

- Stainless steel HSH screws for housing;
- Steel fixing bolts for clamp ring/liner;
- Gaskets;
- O-ring;
- Scraper;